

# Sampling Results Regarding the Discharge of Groundwater Bypass at Fukushima Daiichi Nuclear Power Station (Around South Water Outlet)

<Reference>  
July 28, 2014  
Tokyo Electric Power Company

Unit: Bq/L

	Seawater of the south water outlet Note (near the drainage channel exit) (T-2)
Sampling date	Jul 26, 2014
State	During discharge
Sampling time	11:15 AM
Cesium 134	ND(0.77)
Cesium 137	ND(0.76)
Gross $\beta$	14
Tritium	ND(1.7)

Note: Approx. 330m south from Unit 1-4 water outlet (T-2)

\* "ND" indicates that the measurement result is below the detection limit, and the detection limit of each nuclide is provided in parentheses.

## (Reference) Analysis results of temporary storage tanks for groundwater bypass at Fukushima Daiichi Nuclear Power Station\*

Unit: Bq/L

	Gr2 (Group 2)		Operational targets	Notification limit <sup>*1</sup>	WHO guidelines for drinking-water quality
	TEPCO	Third party organization			
Sampling date	Jul 15, 2014	Jul 15, 2014			
Sampling time	10:09 AM	10:09 AM			
The volume of water in storage [m <sup>3</sup> ]	2,530	2,530			
Cesium 134	ND(0.58)	ND(0.86)	1	60	10
Cesium 137	ND(0.78)	ND(0.60)	1	90	10
Other Gamma Nuclide	Not detected	Not detected	Not to be detected <sup>*2</sup>		
Gross $\beta$	ND(0.88)	ND(0.60)	5(1) (Note)		
Tritium	310	310	1,500	60,000	10,000

\* The results were previously announced on July 25.

\* Third party: Japan Chemical Analysis Center

\* "ND" indicates that the measurement result is below the detection limit, and the detection limit of each nuclide is provided in parentheses.

(Note) The detection limit value for Gross $\beta$  of operational targets are defined as "Less than 1 Bq/L", when sampled approx. once per 10 days.

\*1 Notified Concentration Limit Values: Specified in the rules for the safety and maintenance of nuclear reactor

facilities and the protection of specialized nuclear fuel materials in TEPCO Fukushima Daiichi Nuclear Power Station.

\*2 Other gamma nuclides (except naturally-occurring nuclides) must not be detected during the analysis Cs-134 and Cs-137.

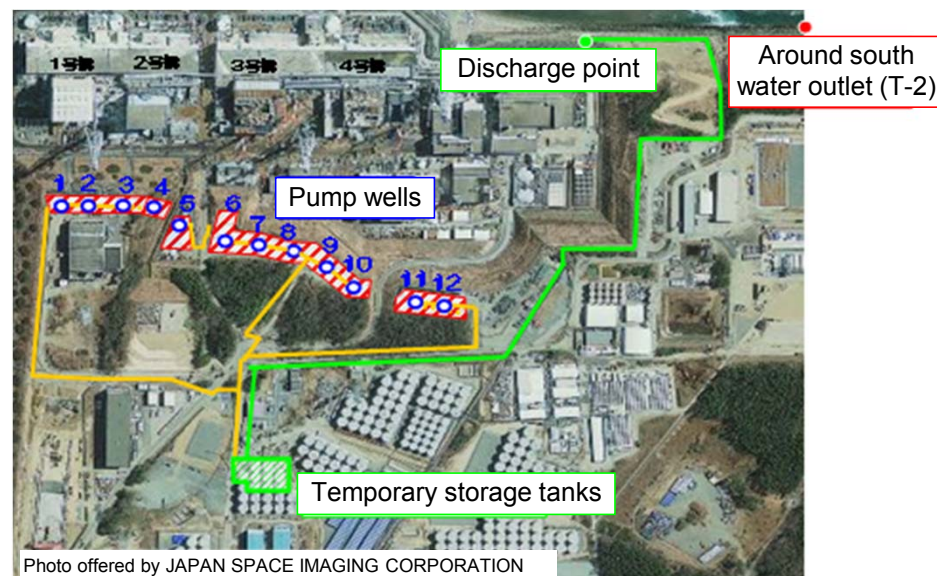


Photo offered by JAPAN SPACE IMAGING CORPORATION